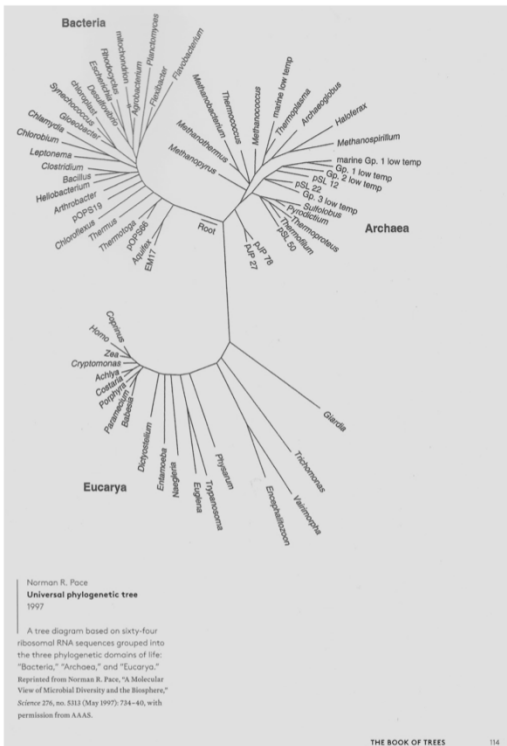


Gen Ed to Grad
School: Three Teaching
Techniques that Work Across
Different Disciplines, Learning
Platforms, and Levels of
Instruction

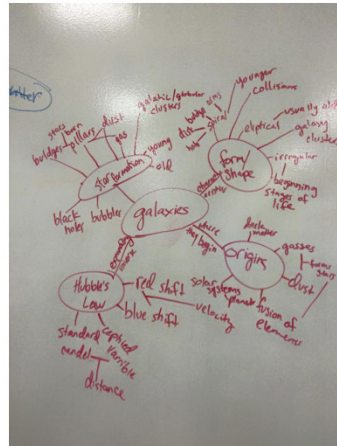
Dr. Robin Ericson S-CAR
Dr. Rebecca Ericson - Physics



RNA tree
 grouped into
 Bacteria,
 Archaea and
 Eucarya

Concept maps – thought made visible

Looking for concepts and connections

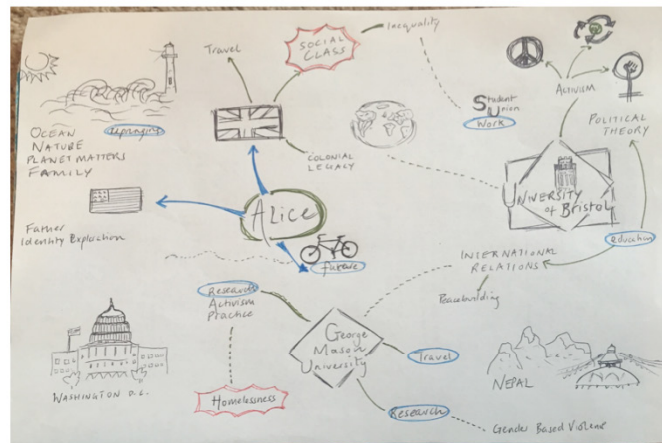
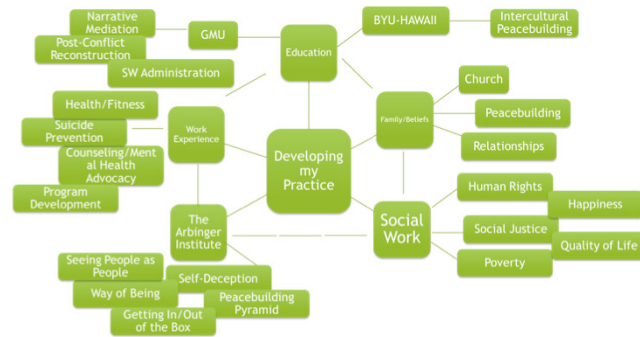


“Sometimes it is best to just draw everything out in order to enhance your understanding.”



Mind maps – organizing ideas

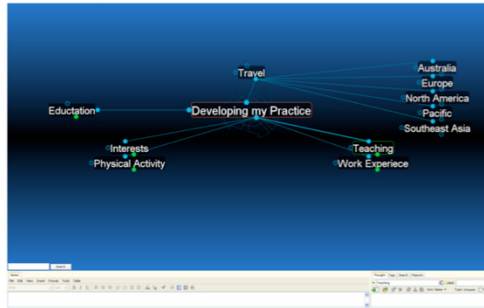
What is my practice?
- Rachele Thompson



How did I get here?
-Alice Peck

Using "Brain"

Starting Point



[Brain](#)





Media Expert

- You are in the School for Conflict Analysis and Resolution
- Can you explain the recent Syrian refugee problem to us from a conflict perspective?



- Guidelines for media experts
- Four possible responses
 - Basic human needs issues
 - Magnitude of the migration
 - International law and norms
 - Syrian civil war

Don't go on the air within 24 hours of a significant emotional event.

Don't get involved with a show that wants you to speak for one political side or the other.

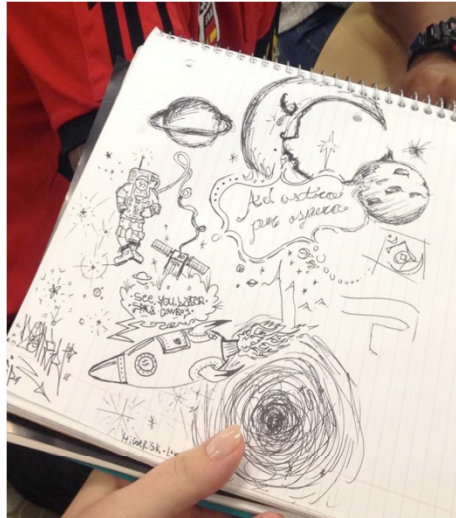
Have four main points to each answer, but only use three of them, unless they let you keep talking.

Express a moderate political view (our colleagues advise being a bit more conservative than your instincts would normally lead you).

Come up with a new significant fact related to the event that may not be widely known.

You are the expert--just state your position; don't bring in theory or other source material.

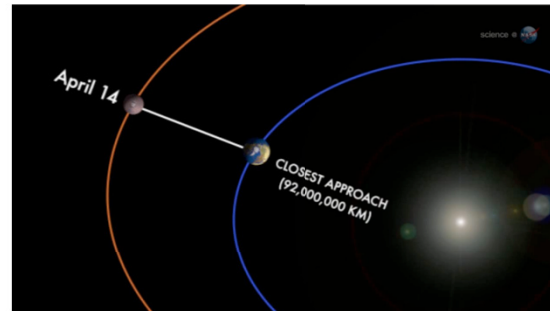
Boldly Go - Design a mission to a planet, moon, asteroid, or comet



Projects – putting what they know to work

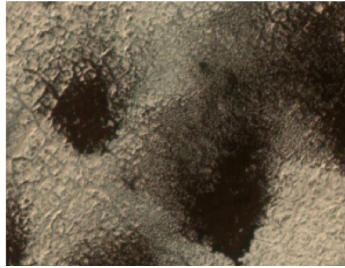
Your Part - How would you contribute to a space mission?

-



Portfolio – collecting evidence of significant learning

Lab that did the most for your learning



“I thought it was great that we could learn in a classroom while also contributing to a citizen science project.”

Journal prompts

If you only had to worry about the daily motion of the Earth as it spins, how fast would you be going as you sit here?

Discuss sources of energy on Earth and then consider which would be present and significant on Mars

Portfolio
Integration of Theory and Practice

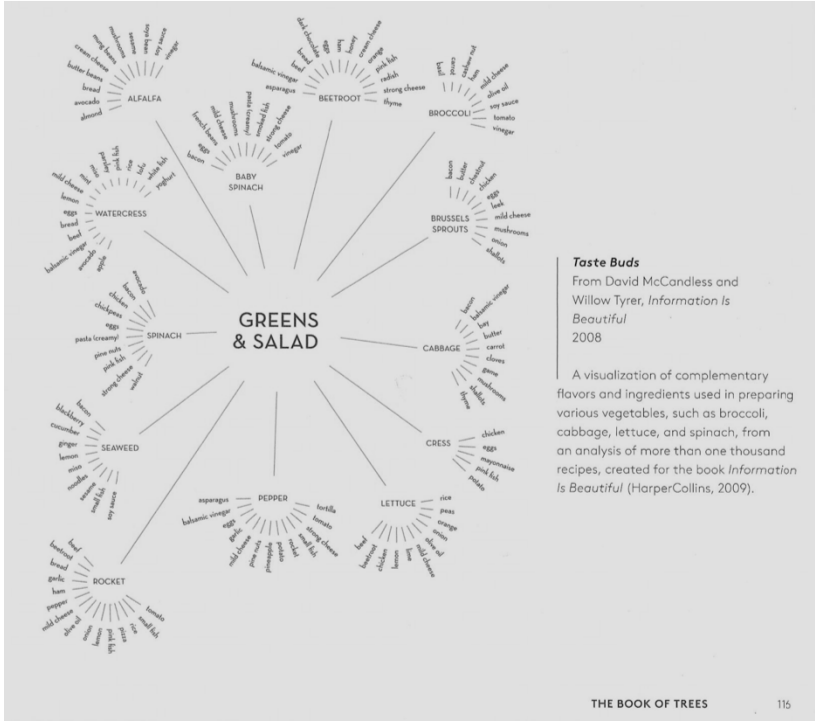


Megan Strum

<https://megstrum.wordpress.com/>

Rachelle THOMPSON

[https://rachelthompson.wordpress.com/
certifications-skills/](https://rachelthompson.wordpress.com/certifications-skills/)



Greens and things that go with them from an analysis of 1000 recipes

Your Turn

- ▶ Map Todd Zakrajsek's keynote presentation
- ▶ Use a tree, mind map or concept map
- ▶ Include your own teaching practices as they relate to concepts from the talk